

=> d his

(FILE 'HOME' ENTERED AT 10:50:03 ON 18 NOV 2002)

FILE 'HCAPLUS' ENTERED AT 10:50:11 ON 18 NOV 2002

L1 88 S THOM S?/AU
 L2 436 S BAXTER A?/AU
 L3 21 S KINDON N?/AU
 L4 20 S SPRINGTHORPE B?/AU
 L5 23 S MCINALLY T?/AU
 L6 1 S L1 AND L2 AND L3 AND L4 AND L5
 SELECT RN L6 1

1 cite appl. priority doc inventor search

FILE 'REGISTRY' ENTERED AT 10:52:00 ON 18 NOV 2002

L7 200 S E1-200
 L8 69 S E201-269
 L9 269 S L7-8
 L10 ~~46 S L9 AND NC5/ES AND NRS>3~~

269 opds total 46 opds have [] & # ring systems

FILE 'HCAPLUS' ENTERED AT 10:53:36 ON 18 NOV 2002

L11 1 S L10

46 opds are only in applicant's priority doc.

FILE 'LREGISTRY' ENTERED AT 10:53:48 ON 18 NOV 2002

L12 STR
 L13 0 S L12

FILE 'REGISTRY' ENTERED AT 11:13:13 ON 18 NOV 2002

L14 2 S L12
 L15 STR L12
 L16 292208 S 46.156.1/RID AND 46.150.18/RID AND NRS>2 NOT PMS/CI
 L17 STR L15
 L18 48 S L17 SSS SAM SUB=L16
 L19 STR L17
 L20 29 S L19 SSS SAM SUB=L16
 L21 ~~312228 S L19 SSS SAM SUB=L16~~
 SAVE L21 TEMP PAT215P/A

17, 228 opds fit STR

FILE 'HCAPLUS' ENTERED AT 11:31:14 ON 18 NOV 2002

L22 ~~2975 S L21~~ 2,975 cites
 L23 2974 S L22 NOT L11
 L24 42 S L23 AND CYTOKINE
 L25 1065 S L22(L) (THU OR DMA OR PAC OR PKT)/RL
 E CHEMOKINE/CT
 E CYTOKIN/CT
 E CYTOKINE RECEPTORS+ALL/CT
 L26 26867 S CYTOKINE RECEPTORS+OLD,NT/CT
 L27 152612 S CYTOKINES+NT/CT
 L28 1 S L25(L)L26-27
 L29 79 S L25 AND L26-27
 L30 30 S L25 AND CHEMOKIN?
 L31 79 S L29 OR L30
 L32 78 S L31 NOT L11
 L33 4 S L32 NOT PATENT/DT
 L34 2 S L33 AND PD<19990804
 L35 74 S L32 AND PATENT/DT
 L36 41 S L35 AND PRD<19990804

prd = priority date of doc.

in order to cut down on the # of citations, I required the opd to be therapeutically linked to cytokines/chemokines & then sorted by priority date

FILE 'STNGUIDE' ENTERED AT 11:44:29 ON 18 NOV 2002

FILE 'HCAPLUS' ENTERED AT 11:47:25 ON 18 NOV 2002

appl. date of patent

PATEL 10/069,215

L37 30 S L35 AND AD<19990804

~~L38 44 S L37 OR L36~~

44 patents total

FILE 'CASREACT' ENTERED AT 11:55:02 ON 18 NOV 2002

L39 STR L19

L40 2 S L39

L41 ~~197 S L39 FUB~~

197 cites for cas react

SAVE TEMP L41 PAT215RCT/A

L42 1 S L41 AND CYTOKINE

L43 1 S L41 AND CHEMOKINE

~~L44 2 S L42 OR L43~~

2 cites related to

L45 29 S L41 AND INHIBITOR

~~L46 28 S L45 NOT L44~~

28 cites related to cpds as an inhibitor

FILE 'HCAPLUS' ENTERED AT 12:08:16 ON 18 NOV 2002

~~L47 1 S L10 AND L6~~

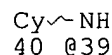
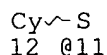
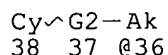
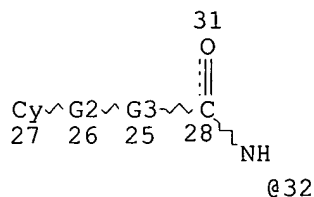
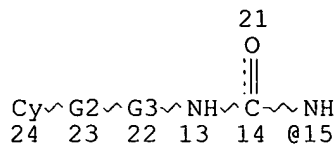
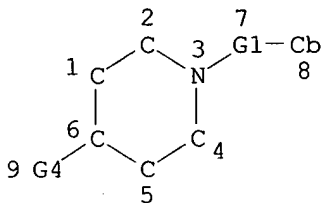
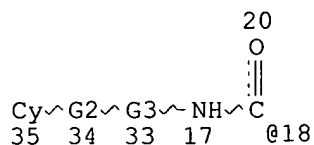
← priority doc of appl.

STR for HCAPLUS

~~⇒ d que 122~~

L16 292208 SEA FILE=REGISTRY ABB=ON PLU=ON 46.156.1/RID AND 46.150.18/RI
D AND NRS>2 NOT PMS/CI

L19 STR



REP G1=(1-4) CH2
REP G2=(0-1) Q
REP G3=(0-6) CH2
VAR G4=18/15/32/36/39/11/CY

NODE ATTRIBUTES:

CONNECT IS E2 RC AT 1
CONNECT IS E2 RC AT 2
CONNECT IS E2 RC AT 4
CONNECT IS E2 RC AT 5
CONNECT IS E2 RC AT 36
DEFAULT MLEVEL IS ATOM
GGCAT IS MCY UNS AT 8
GGCAT IS LIN SAT AT 36
DEFAULT ECLEVEL IS LIMITED
ECOUNT IS E6 C AT 8
ECOUNT IS X6 C AT 36

GRAPH ATTRIBUTES:

RSPEC I
NUMBER OF NODES IS 35

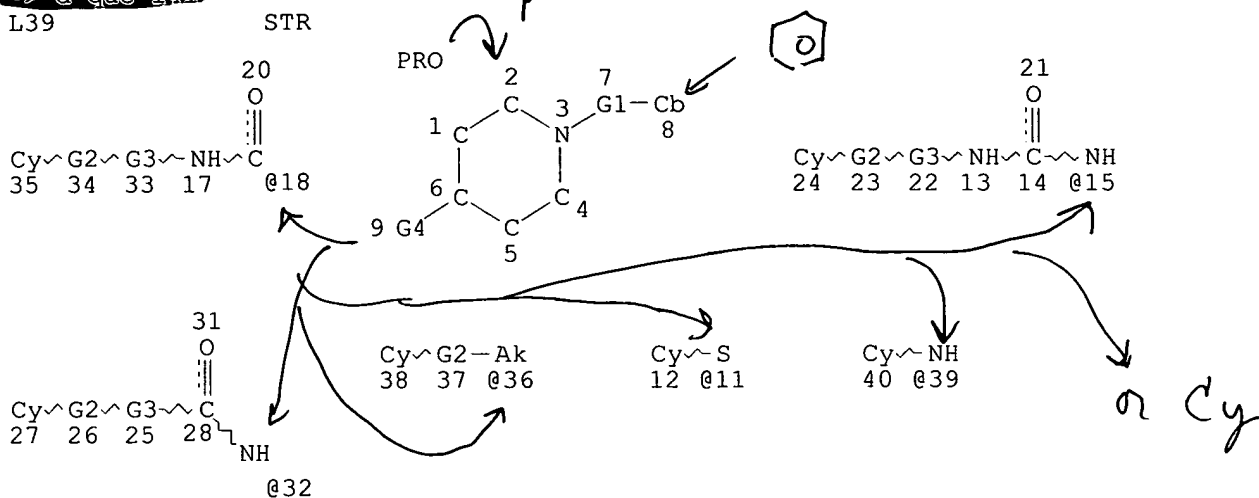
STEREO ATTRIBUTES: NONE

L21 12228 SEA FILE=REGISTRY SUB=L16 SSS FUL L19
L22 2975 SEA FILE=HCAPLUS ABB=ON PLU=ON L21

STR for cas react

PATEL 10/069,215

=> d que 141
L39



REP G1=(1-4) CH2
REP G2=(0-1) Q
REP G3=(0-6) CH2
VAR G4=18/15/32/36/39/11/CY

NODE ATTRIBUTES:

CONNECT IS E2 RC AT 1
CONNECT IS E2 RC AT 2
CONNECT IS E2 RC AT 4
CONNECT IS E2 RC AT 5
CONNECT IS E2 RC AT 36

DEFAULT MLEVEL IS ATOM

GGCAT IS MCY UNS AT 8
GGCAT IS LIN SAT AT 36

DEFAULT ECLEVEL IS LIMITED

ECOUNT IS E6 C AT 8
ECOUNT IS X6 C AT 36

GRAPH ATTRIBUTES:

RSPEC I

NUMBER OF NODES IS 35

STEREO ATTRIBUTES: NONE

L41 197 SEA FILE=CASREACT SSS FUL L39 (1555 REACTIONS)